

# When thinking about Aberdeen, what's important to you?

## CULTURE

Protect and maintain Aberdeen's current culture of family-friendliness, recreation, and hometown feel.

## ECONOMIC DEVELOPMENT

Promote Aberdeen as an attractive place for businesses to locate and thrive, and create a business-friendly environment.

## ENTERTAINMENT/NIGHTLIFE

Add more fun and engaging activities for all ages and encourage businesses that support nighttime activity (e.g., restaurants, bars).

## HOUSING OPTIONS

Increase diversity in the City's housing options, including type, size, cost, and amenities.

## OUTDOOR RECREATION/ENVIRONMENT

Increase or expand options in the City for outdoor recreation; protect and maintain the City's environmental resources.

## CREATING DESTINATIONS

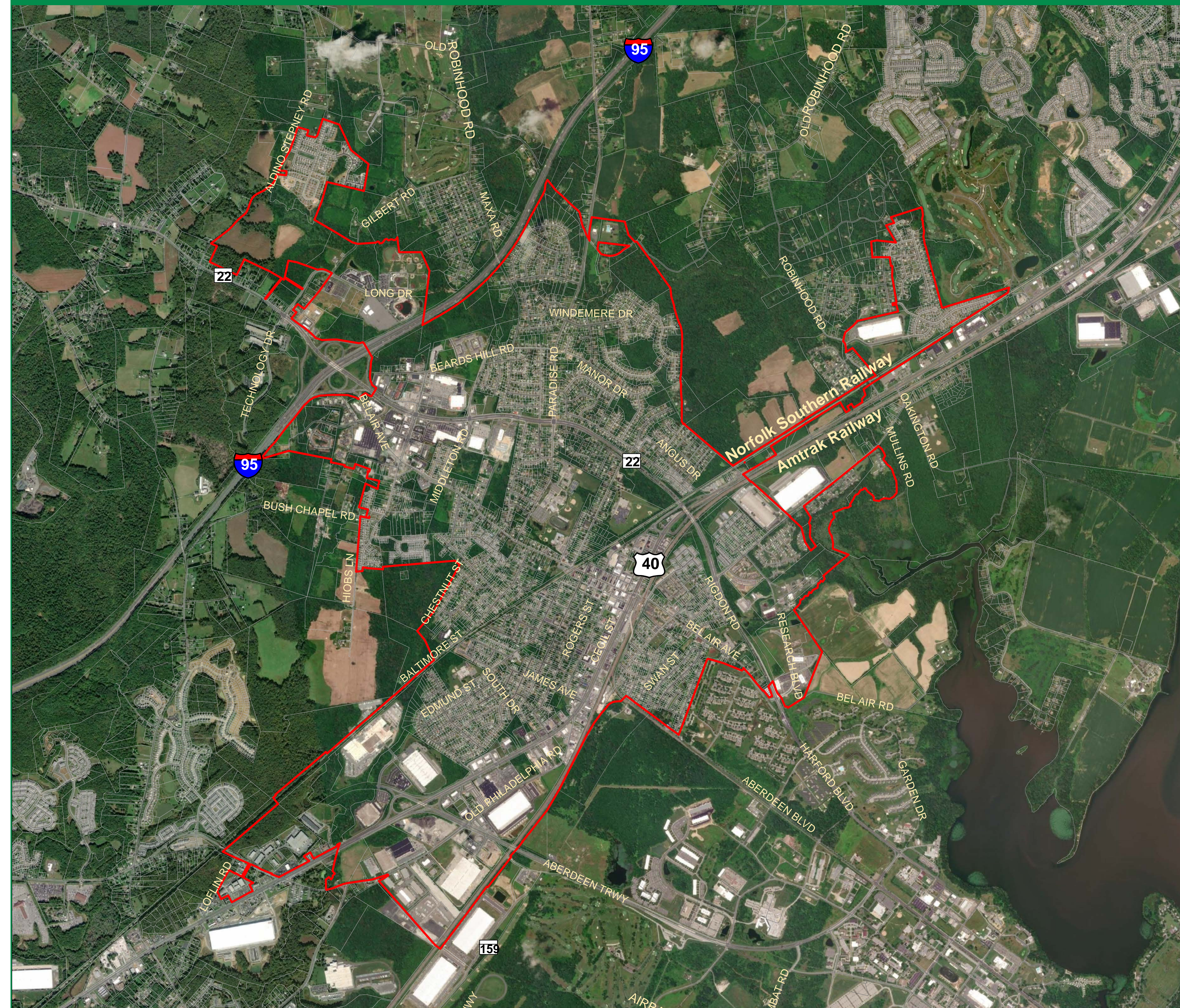
Increase the variety of activities within a certain area of the City or along a particular corridor that incorporate shops, housing, offices, and other business types.

## DESIGN & APPEARANCE

Enhance the impression of Aberdeen through aesthetic improvements in new developments, reuse or redevelopment of vacant buildings, enhanced public spaces and corridors, and well-maintained landscapes.

## OTHER

## STUDY AREA OVERVIEW



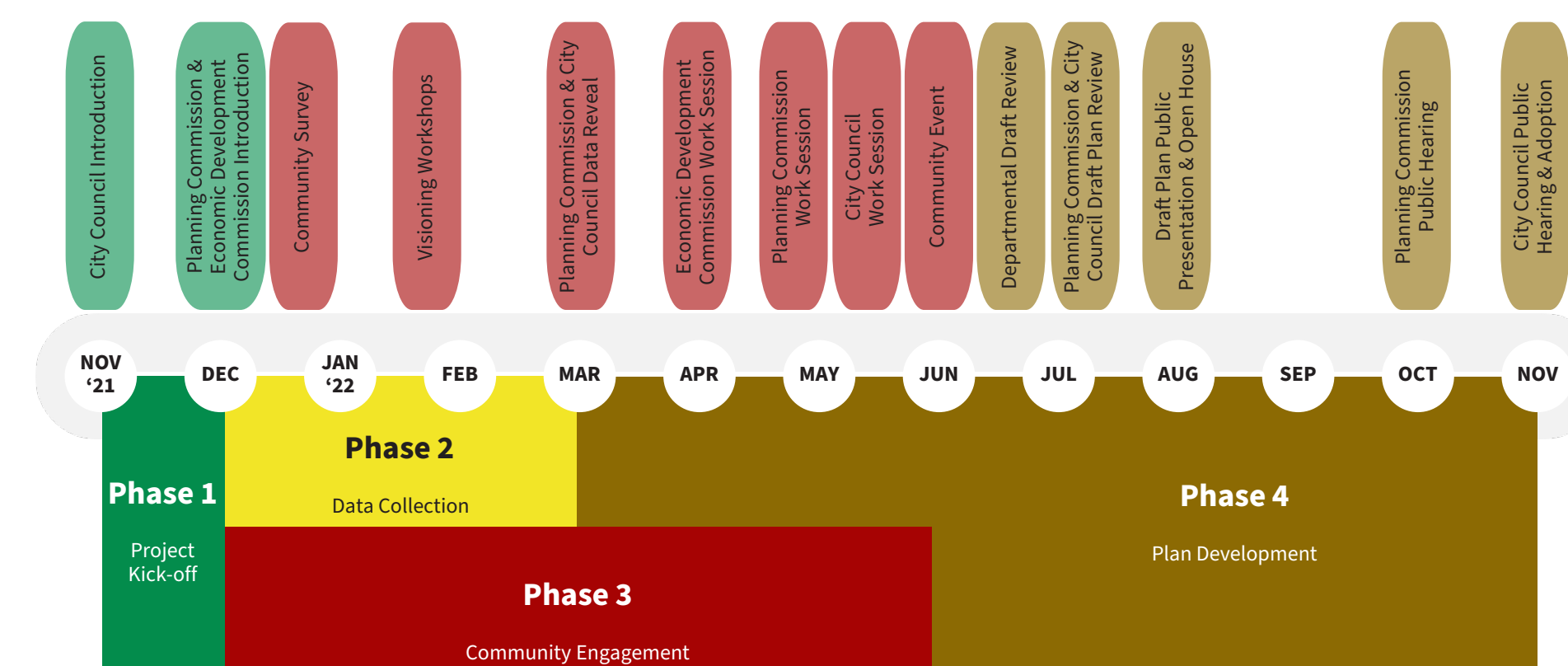
## WHAT IS A COMPREHENSIVE PLAN?

planAberdeen will serve as the City's Comprehensive Plan, which guides the growth and development of the City into the future. It provides guidance on:

- Land use and municipal growth
- Natural resources and the environment
- Transportation
- Housing
- Utilities
- Recreation and open space
- Public facilities and services

Guidance from planAberdeen will influence future City policies and decisions. It is not a rezoning of the City.

## PROJECT SCHEDULE



## STAY INVOLVED

More information can be found on the project website:

<https://www.plan.aberdeenmd.gov>

Take the community survey by scanning the QR code or going to the URL below:



[www.surveymonkey.com/r/planAberdeen](https://www.surveymonkey.com/r/planAberdeen)

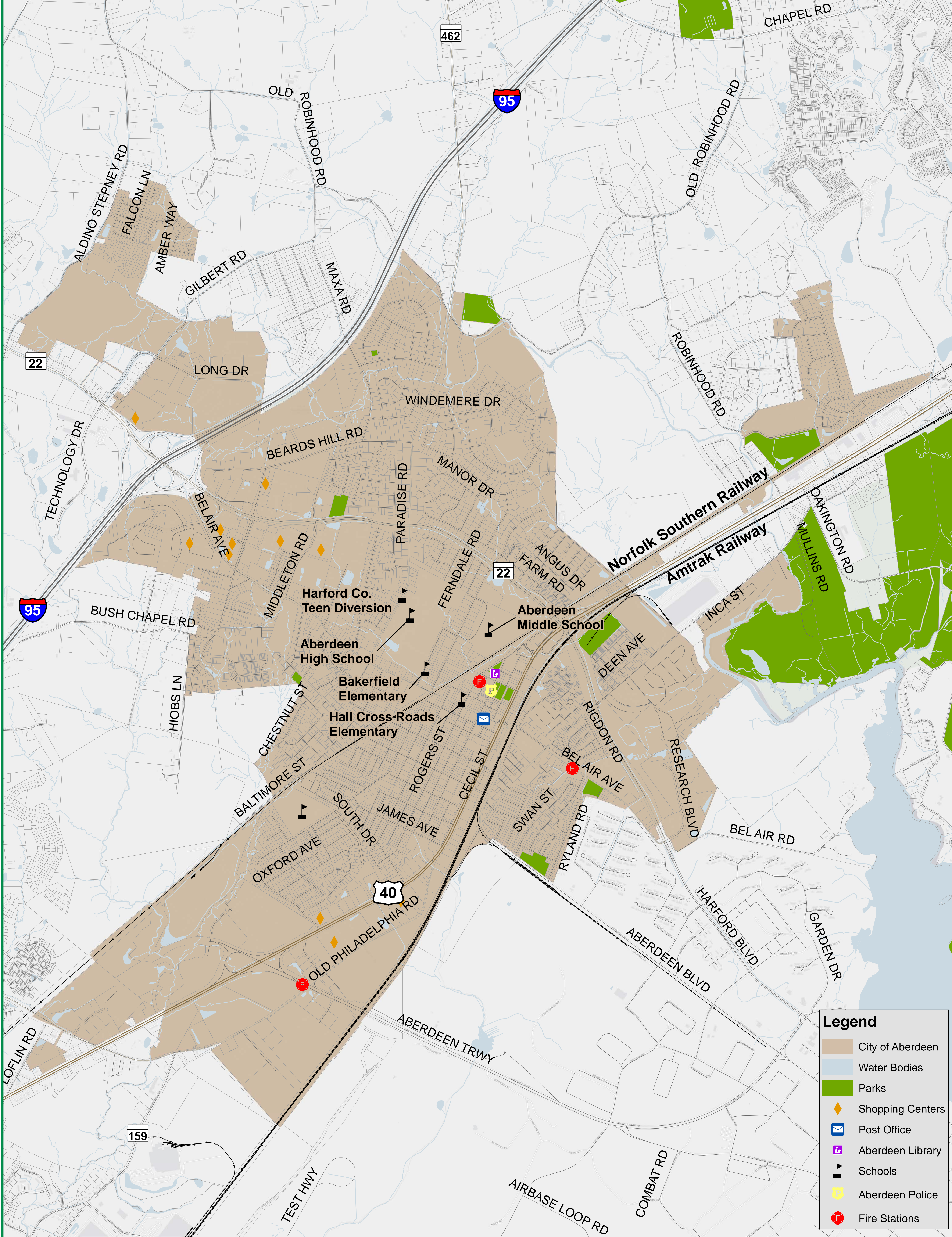
WHAT DO YOU LIKE ABOUT ABERDEEN?

WHAT DO YOU DISLIKE ABOUT ABERDEEN?

**WHERE DO YOU LIVE?  
USE THE GREEN DOTS TO SHOW US WHERE.**

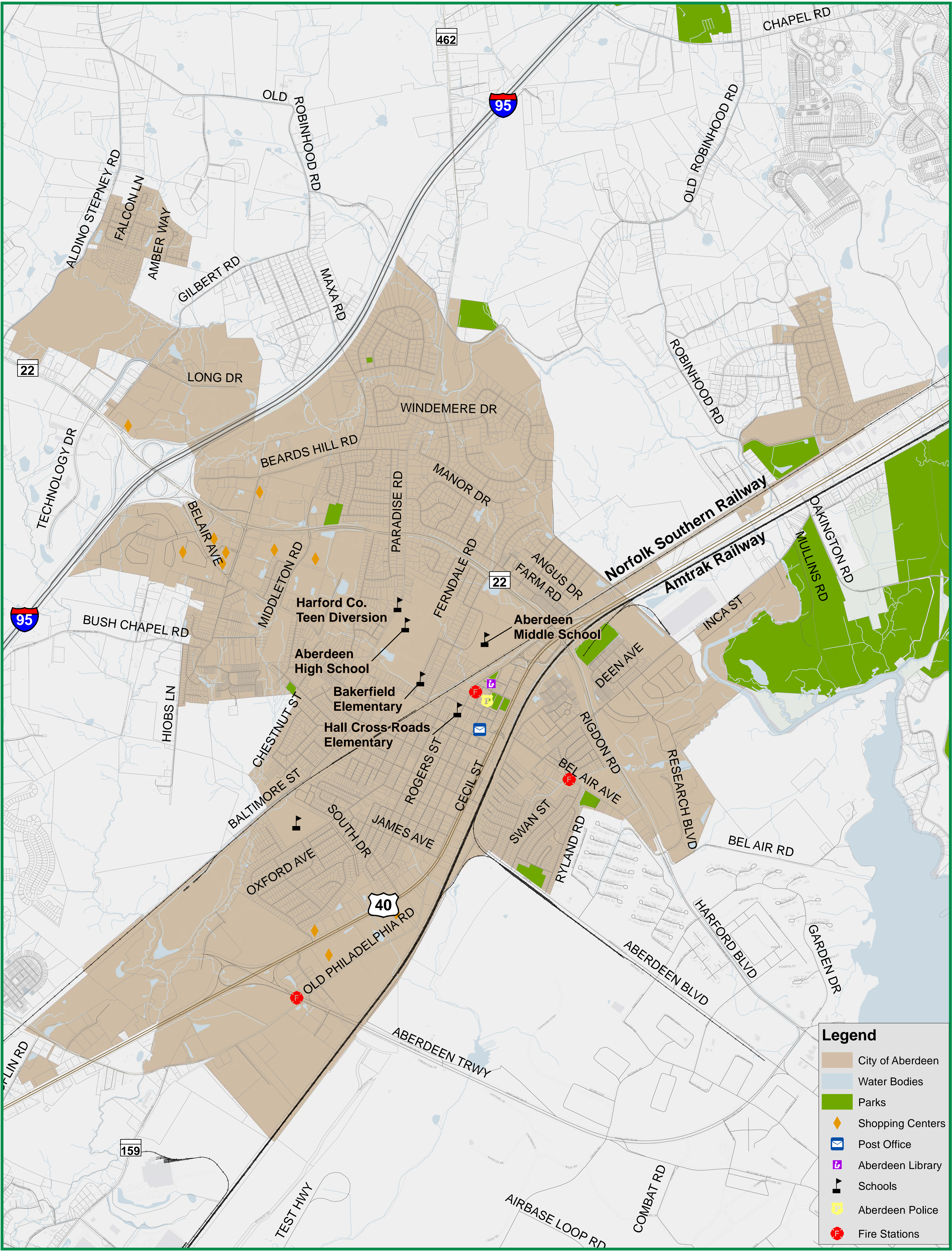
**WHERE DO YOU WORK?  
USE THE RED DOTS TO SHOW US WHERE.**

**IF YOU LIVE OR WORK OUTSIDE THE AREAS SHOWN ON THE MAP,  
USE YOUR DOTS TO SHOW THE CLOSEST LOCATION.**



**ARE ANY OF THE EXISTING COMMERCIAL AND RETAIL AREAS/CORRIDORS IN NEED OF REDEVELOPMENT? USE THE GREEN DOTS TO SHOW US WHERE AND YOUR STICKY NOTES TO TELL US WHY.**

**ARE THERE CRITICAL UNDEVELOPED COMMERCIAL OR RETAIL LOCATIONS/CORRIDOR OPPORTUNITIES? USE THE RED DOTS TO SHOW US WHERE AND YOUR STICKY NOTES TO TELL US WHY.**



**WHAT AESTHETIC ASSETS DOES ABERDEEN HAVE THAT SHOULD BE PRESERVED OR ENHANCED?**

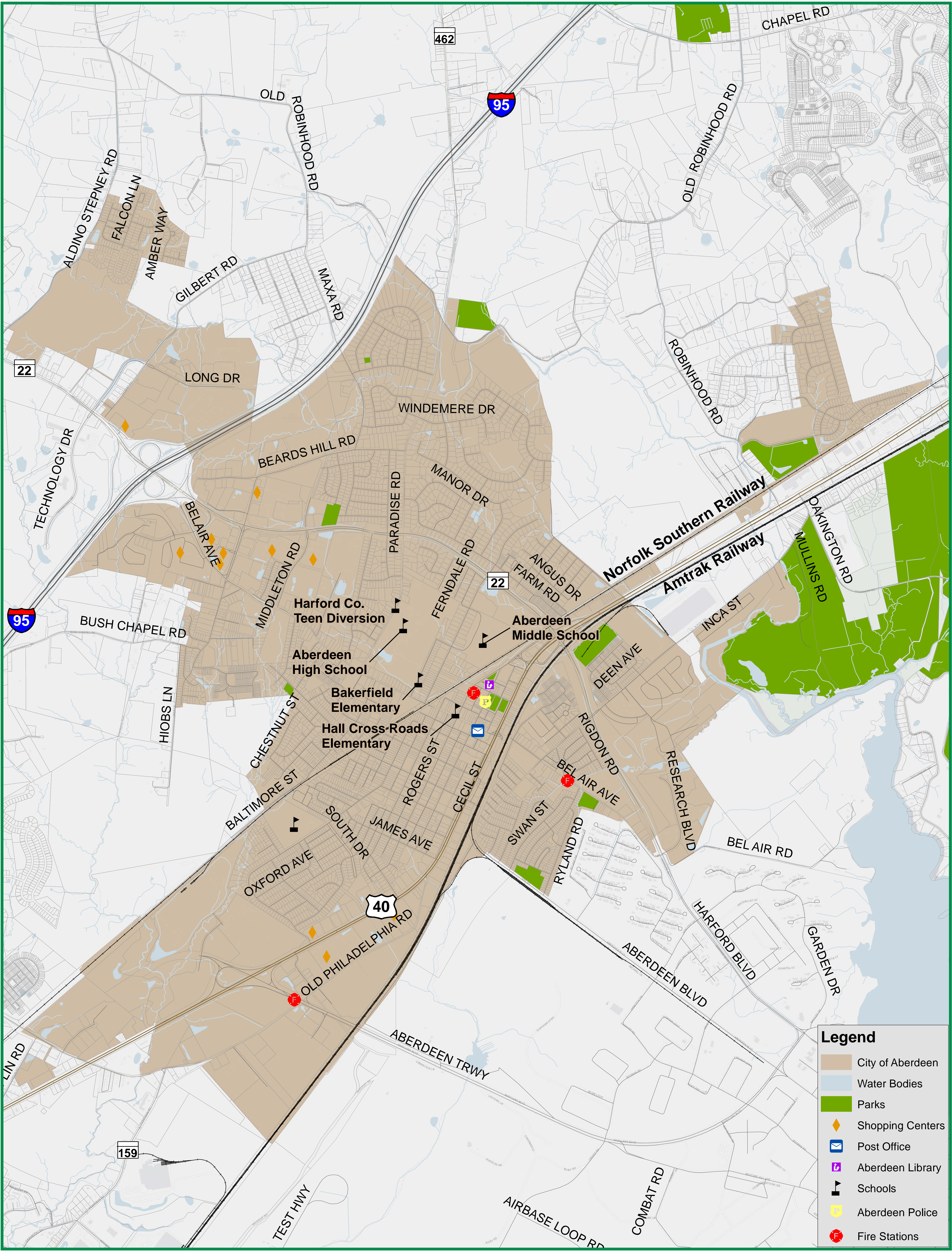
**WHAT AESTHETIC ENHANCEMENTS WOULD YOU LIKE TO SEE IN ABERDEEN THAT DON'T EXIST NOW?**

**WHAT RECREATIONAL OPTIONS ARE MISSING IN ABERDEEN?**

**WHO IS CURRENTLY UNDERSERVED BY EXISTING AMENITIES OR PROGRAMS?**

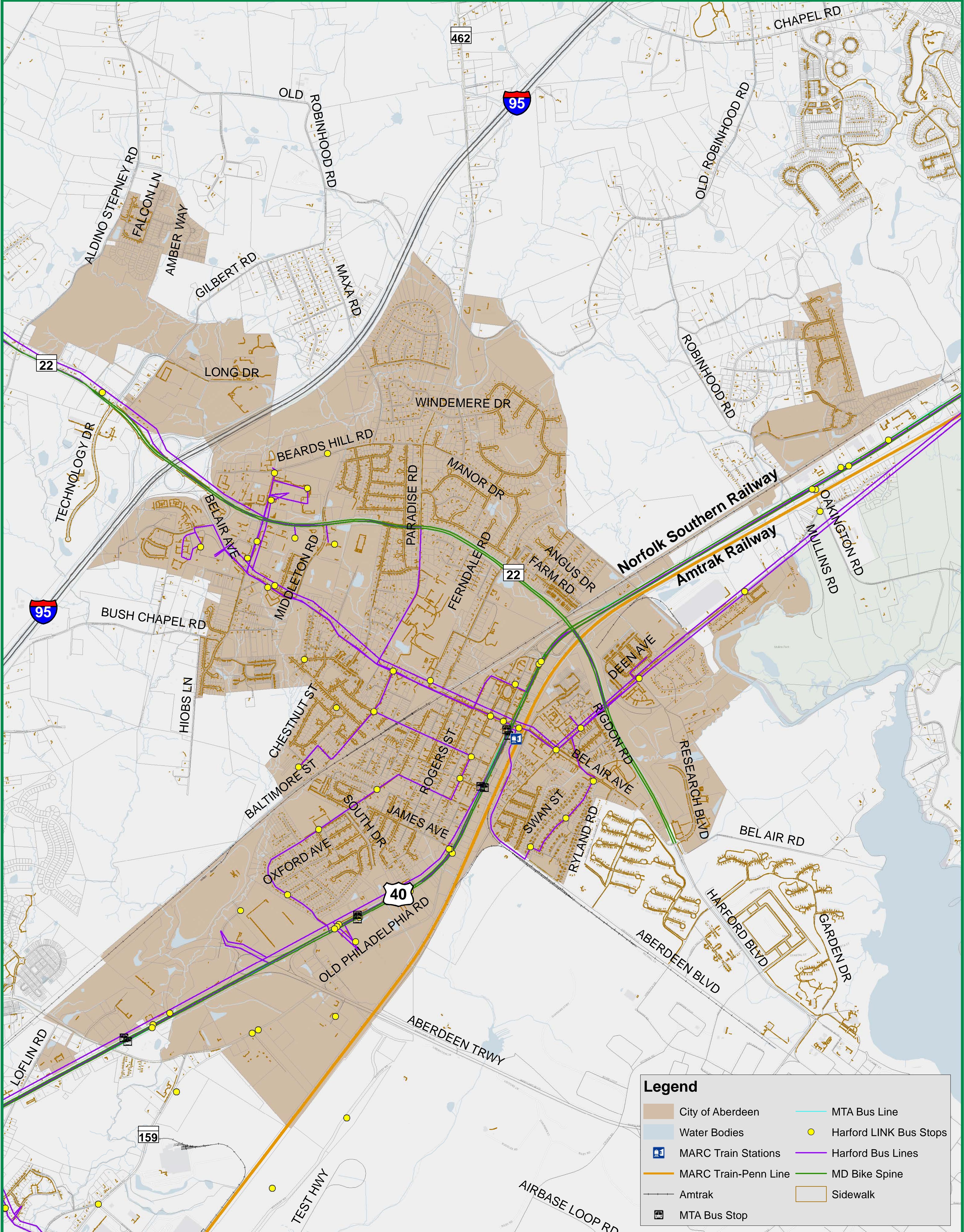
**WHAT EXISTING DESTINATIONS ARE IMPORTANT IN ABERDEEN? USE THE GREEN DOTS TO TELL US WHERE AND YOUR STICKY NOTES TO TELL US WHY.**

**ARE THERE FUTURE DESTINATIONS YOU'D LIKE TO SEE IN ABERDEEN? USE THE RED DOTS TO SHOW US WHERE AND YOUR STICKY NOTES TO TELL US WHAT.**



**WHERE IS ABERDEEN'S TRANSPORTATION NETWORK WORKING WELL? ARE THERE EXAMPLES TO REPLICATE IN OTHER CITY LOCATIONS? USE THE GREEN DOTS TO TELL US WHERE AND YOUR STICKY NOTES TO TELL US WHY.**

**WHERE IS IT DIFFICULT TO WALK, RIDE YOUR BIKE, OR USE PUBLIC TRANSIT IN ABERDEEN? WHERE IS IT DIFFICULT TO GET AROUND IF YOU'RE NOT IN A PERSONAL VEHICLE? USE THE RED DOTS TO SHOW US WHERE AND YOUR STICKY NOTES TO TELL US WHY.**



**Legend**

City of Aberdeen	MTA Bus Line
Water Bodies	Harford LINK Bus Stops
MARC Train Stations	Harford Bus Lines
MARC Train-Penn Line	MD Bike Spine
Amtrak	Sidewalk
MTA Bus Stop	